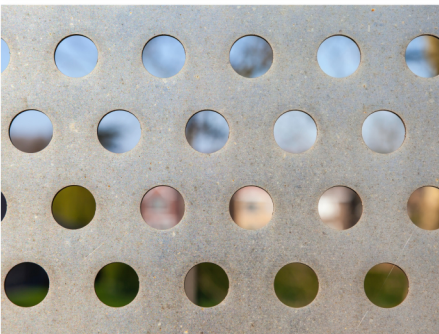




Cost Effective, Low Carbon,
12% Chrome Dual Phase Stainless Steel

25 West Park Circle
Birmingham, AL 35211
1-866-982-7726
www.tassco.com
@TASSCO_Solution



CORRHARD

CORRHARD is the most economical steel plate for applications requiring both abrasion & corrosion resistance. CORRHARD has a high hardness compared to mild steel, weathering steels, and 304 series stainless steels (Aim 310 BHN.) The high hardness balanced with 12% Chrome & low Carbon improves wear life in sensitive material handling applications. CORRHARD has a low coefficient of friction compared to other wear plate materials which allows improved slideability of materials in moist or damp applications. CORRHARD is both formable and weldable.

Availability:

1/4", 3/8", and 1/2" thick in plates
96" wide X 240" long.

Custom thicknesses & plate
sizes available upon request.

Applications	Benefits
Bucket Liners	Carbon: 0.025 Max
Chute & Hopper Liners	Chromium: 11.0 - 12.5
Coal Handling Equipment	Hardness: 260 - 360 BHN
Cement Plant Equipment	
Quarry Equipment	Higher Yield Strength than 304 Stainless
Chip Storage Bins	Great Formability
Coal Storage Bins	Weldable using conventional techniques
Sugar Beet Processing Equipment	
Salt trucks	

Custom Solution Capabilities

TASSCO offers a variety of processing services. We offer intricate shape cutting, forming, rolling, welding, fabrication, hard surfacing, drilling, & machining. Our technical sales and field services team will work closely with you to understand your process and develop a solutions that meets your unique requirements.